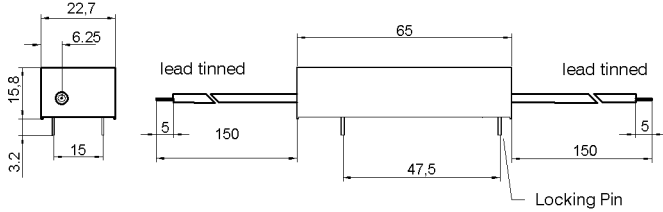


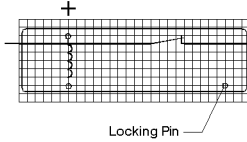
Preliminary Datasheet

DIMENSIONS (mm)



LAYOUT

pitch 2.5 mm/Top view



MARKING



PINS

Pins: Ø0.8 mm
 L = 3.2±0.3 mm
 Material: Cu-alloy tinned

CABLE

PTFE ignition single wire AWG20/7
 p/n 4003005300
 L = 150 mm

MARKING

MEDER-Label
 Type/Layout
 Production code,
 EN60062/Factory code



Coil Data at 20 °C	Conditions	Min	Typ	Max	Unit
Coil resistance		234	260	286	Ohm
Coil voltage			12	15	VDC
Rated power			554		mW
Thermal Resistance			24		K/W
Pull-In voltage				9	VDC
Drop-Out voltage		1			VDC

Contact data 69	Conditions	Min	Typ	Max	Unit
Contact-No.		69			
Contact-form		A			
Contact-material		Tungsten			
Contact rating	Any DC combination of V & A not to exceed their individual max.'s			50	W
Switching voltage	DC or Peak AC			10.000	V
Switching current	DC or Peak AC			3	A
Carry current	DC or Peak AC			5	A
Contact resistance static	Measured with 40% overdrive Start Value			150	mOhm
Contact resistance dynamic	Maximum value 1,5 ms after excitation Start Value			250	mOhm
Insulation resistance	RH <45 %, 100 V test voltage	10			GOhm
Breakdown voltage	according to IEC 255-5	15.000			VDC
Operate time incl. bounce	measured with 40% overdrive			3	ms
Release time	measured with no coil excitation			1,5	ms
Capacity	@ 10 kHz		0,8		pF

Special Product Data	Conditions	Min	Typ	Max	Unit
Insulation resistance Coil/Contact	RH <45%, 200 VDC test voltage	1.000			GOhm
Insulation voltage Coil/Contact	according to IEC 255-5	11			kVAC
Housing material		Polycarbonat			
Sealing compound		Polyurethan			
Connection pins		Copper alloy tin plated			
number of contacts		1			

Modifications in the sense of technical progress are reserved

Designed at: 30.05.08 | Designed by: WKOVACS
 Last Change at: | Last Change by:

Approval at: | Approval by:
 Approval at: | Approval by:

Version: 02

