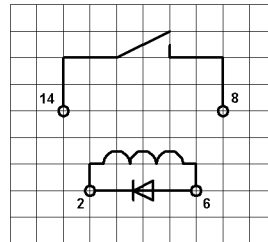
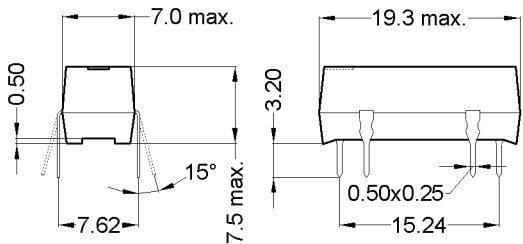


### Dimensions

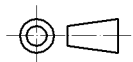
### Layout 13D Pitch 2.54 / Top View

### Marking

Type - Layout  
 Production-Code  
 EN60062



MEDER electronic  
 DIP12-1A75-13D YW



unspecified tolerances  $\pm 0.1\text{mm}$   
 nicht spezifizierte Toleranzen  $\pm 0.1\text{mm}$

| Coil Data at 20 °C | Conditions   | Min | Typ   | Max   | Unit |
|--------------------|--|-----|-------|-------|------|
| Coil resistance    |  | 900 | 1.000 | 1.100 | Ohm  |
| Coil voltage       |  |     | 12    |       | VDC  |
| Rated power        |  |     | 144   |       | mW   |
| Coil current       |  |     | 12    |       | mA   |
| Thermal resistance | max. Relay temperature<br>= operating temperature + self heating |     | 108   |       | K/W  |
| Inductance         |  |     | 106   |       | mH   |
| Pull-In voltage    |  |     |       | 8,4   | VDC  |
| Drop-Out voltage   |  | 1,8 |       |       | VDC  |

| Contact data 75              | Conditions   | Min | Typ | Max | Unit  |
|------------------------------|--|-----|-----|-----|-------|
| Contact rating               | Any DC combination of V & A<br>not to exceed their individual max.'s |     |     | 10  | W     |
| Switching voltage (<31 AT)   | DC or Peak AC  |     |     | 500 | V     |
| Switching current            | DC or Peak AC  |     |     | 0,5 | A     |
| Carry current                | DC or Peak AC  |     |     | 1   | A     |
| Contact resistance static    | Measured with 40% overdrive<br>Start Value                           |     |     | 200 | mOhm  |
| Insulation resistance        | RH <45 %, 100 V test voltage   | 10  |     |     | TOhm  |
| Breakdown voltage (20-30 AT) | according to IEC 255-5   | 1,5 |     |     | kV DC |
| Operate time incl. bounce    | measured with 40% overdrive  |     |     | 0,5 | ms    |
| Release time                 | measured with no coil excitation                                     |     |     | 0,1 | ms    |
| Capacity                     | @ 10 kHz across open switch  |     | 0,2 |     | pF    |

| Special Product Data               | Conditions             | Min  | Typ                       | Max | Unit  |
|------------------------------------|------------------------|------|---------------------------|-----|-------|
| Number of contacts                 |                        |      | 1                         |     |       |
| Contact - form                     |                        |      | A - NO                    |     |       |
| Dielectric Strength Coil/Contact   | according to IEC 255-5 | 4,25 |                           |     | kV DC |
| Insulation resistance Coil/Contact | 40 °C, 95% R.H.        | 10   |                           |     | TOhm  |
| Capacity Coil/Contact              | @ 10 kHz               |      | 0,8                       |     | pF    |
| Case colour                        |                        |      | black                     |     |       |
| Housing material                   |                        |      | epoxy resin               |     |       |
| Connection pins                    |                        |      | Copper alloy tin plated   |     |       |
| Magnetic Shield                    |                        |      | no                        |     |       |
| Reach / RoHS conformity            |                        |      | yes                       |     |       |
| Approval                           |                        |      | UL File No. NRNT2.E156887 |     |       |
| Approval                           |                        |      | UL File No. NRNT8.E156887 |     |       |

Modifications in the sense of technical progress are reserved

Designed at: 12.09.07 Designed by: THAUKE  
 Last Change at: 20.08.09 Last Change by: KSCHIELENSKI

Approval at: 13.09.07 Approval by: RRIPL  
 Approval at: 21.08.09 Approval by: KOLBRICH

Version: 3



*Products for tomorrow...*

Europe: +49 / 7731 8399 0 | Email: info@meder.com  
USA: +1 / 508 295 0771 | Email: salesusa@meder.com  
Asia: +852 / 2955 1682 | Email: salesasia@meder.com

Item No.:  
**3212175113**  
Item:  
**DIP12-1A75-13D**

| Environmental data    | Conditions                  | Min          | Typ | Max | Unit |
|-----------------------|-----------------------------|--------------|-----|-----|------|
| Shock                 | 1/2 sine wave duration 11ms |              |     | 50  | g    |
| Vibration             | from 10 - 2000 Hz           |              |     | 20  | g    |
| Operating temperature |                             | -20          |     | 70  | °C   |
| Storage temperature   |                             | -35          |     | 95  | °C   |
| Soldering temperature | wave soldering max. 5 sec.  |              |     | 260 | °C   |
| Washability           |                             | fully sealed |     |     |      |

| General data | Conditions | Min               | Typ | Max | Unit |
|--------------|------------|-------------------|-----|-----|------|
| Total weight |            |                   | 1,4 |     | g    |
| Packaging    |            | Tube per 25 piece |     |     |      |

Modifications in the sense of technical progress are reserved

Designed at: 12.09.07    Designed by: THAUKE  
Last Change at: 20.08.09    Last Change by: KSCHIELENSKI

Approval at: 13.09.07    Approval by: RRIPL  
Approval at: 21.08.09    Approval by: KOLBRICH

Version: 3