

DESCRIPTION

The MK25 is a push-button based on reed technology, which is used in different applications. With his contactless switching and the EX approval it's the safest way for switching in explosive environments. The simply mounting does take place with a standard drilling (see drilling template) in a steel plate up to 4mm. The button plates are available in the colors black, red, blue, yellow and green. There are sufficient combination possibilities for your application.



FEATURES

- Contact 1 form A
- Contactless switching
- Switching zone is hermetically sealed
- EX approval confirm to EU directives 94/9/EC
- Operating temperature of -40 to $+60^{\circ}\text{C}$
- Simple mounting
- Button plates in different colors available (The protection caps with different colors must be ordered separately.)

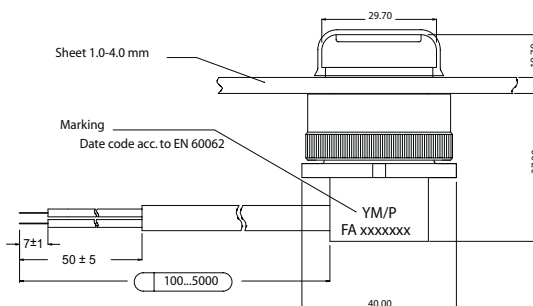
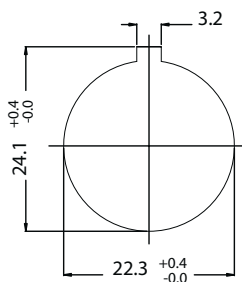
APPLICATIONS

- Industrial appliance
- Machinery mode switch
- Tank systems
- Applications with a difficult environments

DIMENSIONS

All dimensions in mm, unspecified tolerances ± 0.1 mm

Drilling Template



Push-button based on reed switch

ORDER INFORMATION

Series	Contact Form	Switch Model	Cable Length (mm)	Termination
MK25 -	xx	xx	xxx	x
Options	1 Form A	46	5000*	W
		75		
	1 Form C	90		

* Other cable lengths from 100 to 5000 mm available.

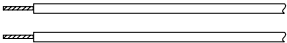
Part Number Example

MK25 - 1A46 - 5000 W

1A is the contact form
46 is the switch model
500 is the cable length (mm)
W is the termination

TERMINATION

For wire and termination details please contact factory.

W		The cable cut length includes: 5mm of wire stripped and tinned.
----------	---	--

CONTACT DATA

All Data at 20° C	Switch Model → Contact Form →	Switch 1A 46			Switch 1A 75			Switch 1C 90			Unit
		Min.	Typ.	Max.	Min.	Typ.	Max.	Min.	Typ.	Max.	
Switching Power	Any DC combination of V & A not to exceed their individual max.'s			10			10			20	W
Switching Voltage	DC or peak AC			100			1000			175	V
Switching Current	DC or peak AC			0.5			0.5			0.5	A
Carry Current	DC or peak AC			1.5			1.0			1.0	A
Static Contact Resistance (initial)	Measured with 40% overdrive			150			200			150	mΩ
Insulation Resistance	RH 45%	10 ⁹			10 ¹⁰		200	10 ⁹		250	Ω
Breakdown Voltage		225			1500			200			VDC
Operate Time incl. Bounce	Measured w/ 40 % overdrive			0.7			0.5			0.7	ms
Release Time	Measured w/ no coil suppression			0.1			0.1			1.5	ms
Capacitance	Across contact to coil		0.2			0.4					pF
Environmental Data											
Shock Resistance	1/2 sinus wave duration 11 ms			50			50			50	g
Vibration Resistance	From 10 - 2000 Hz			35			20			20	g
Ambient Temperature	10°C/ minute max. allowable	-30		60	-20		150	-20		85	°C
Storage Temperature	10°C/ minute max. allowable	-40		60	-40		85	-35		85	°C
Material Case	PA 6, black										